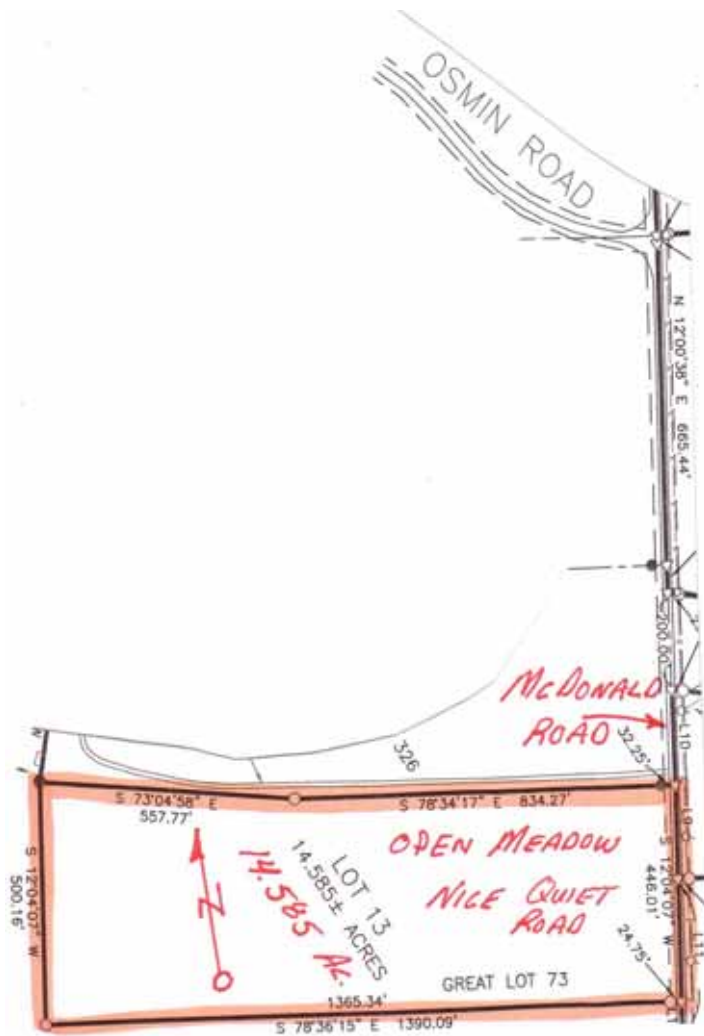
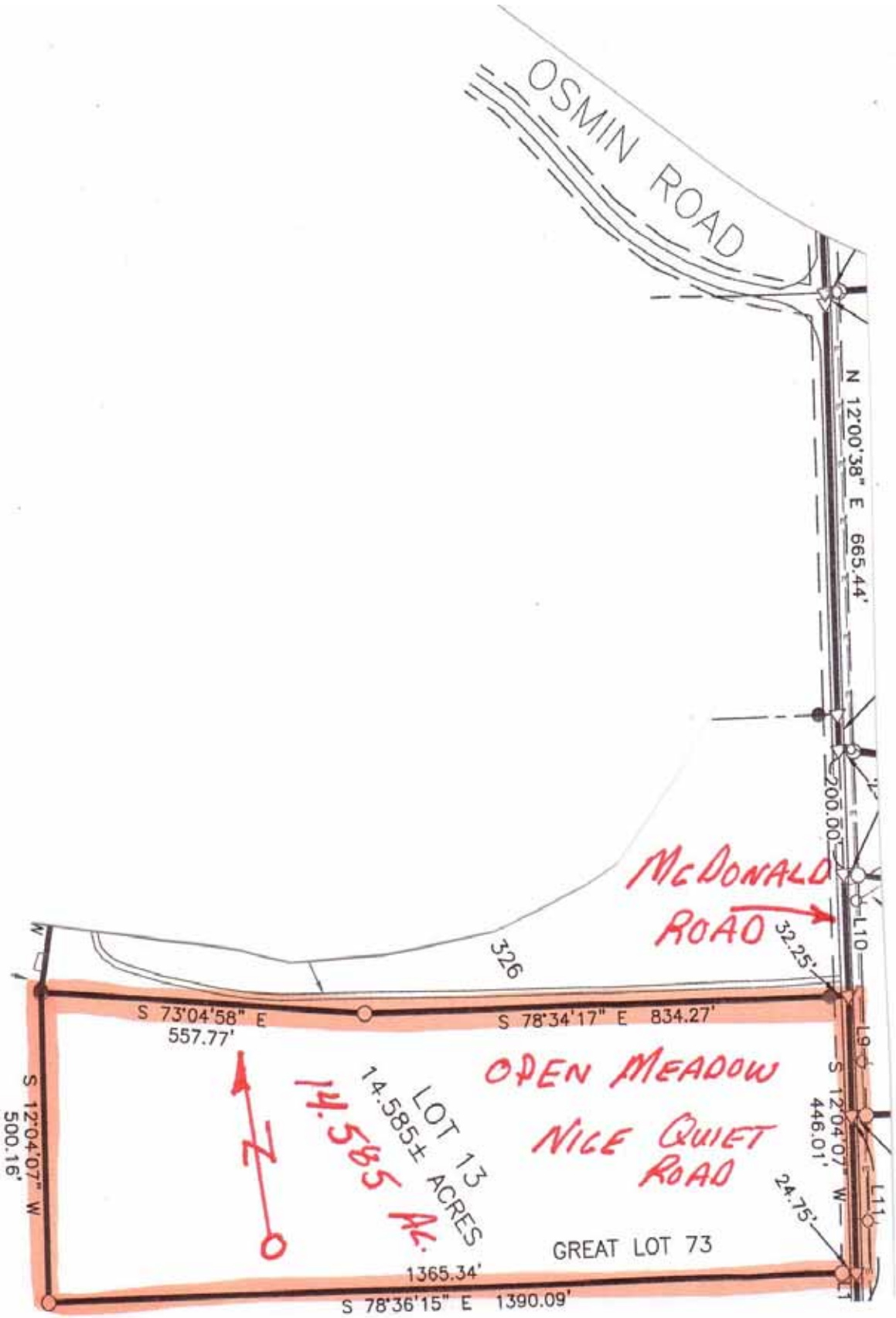


STEUBEN COUNTY, NY— TOWN OF WEST UNION.— 14.585 ACRES
TREMENDOUS VIEW FROM OPEN ROLLING MEADOW \$39,500



No. 2451 - Steuben County, New York, Town of West Union — 14.585 acres. Open meadow level to gently rolling and sloping located along quiet and well maintained town road. Surveyed, onlot septic approved, utilities at road, and financing available. \$39,500

**TIMBERLINE REAL ESTATE
ROUTE 267—CHOCONUT, PA
PHONE: 1-800-334-3659
EMAIL: land@timberlinerealestate.net
www.timberlinerealestate.net**



OSMIN ROAD

N 12°00'38" E 665.44'

200.00'

McDONALD ROAD

326

32.25'

S 73°04'58" E 557.77'

S 78°34'17" E 834.27'

S 12°04'07" W 500.16'

S 12°04'07" W 446.01'



LOT 13
14.585± ACRES
14,585 A.

OPEN MEADOW
NICE QUIET ROAD

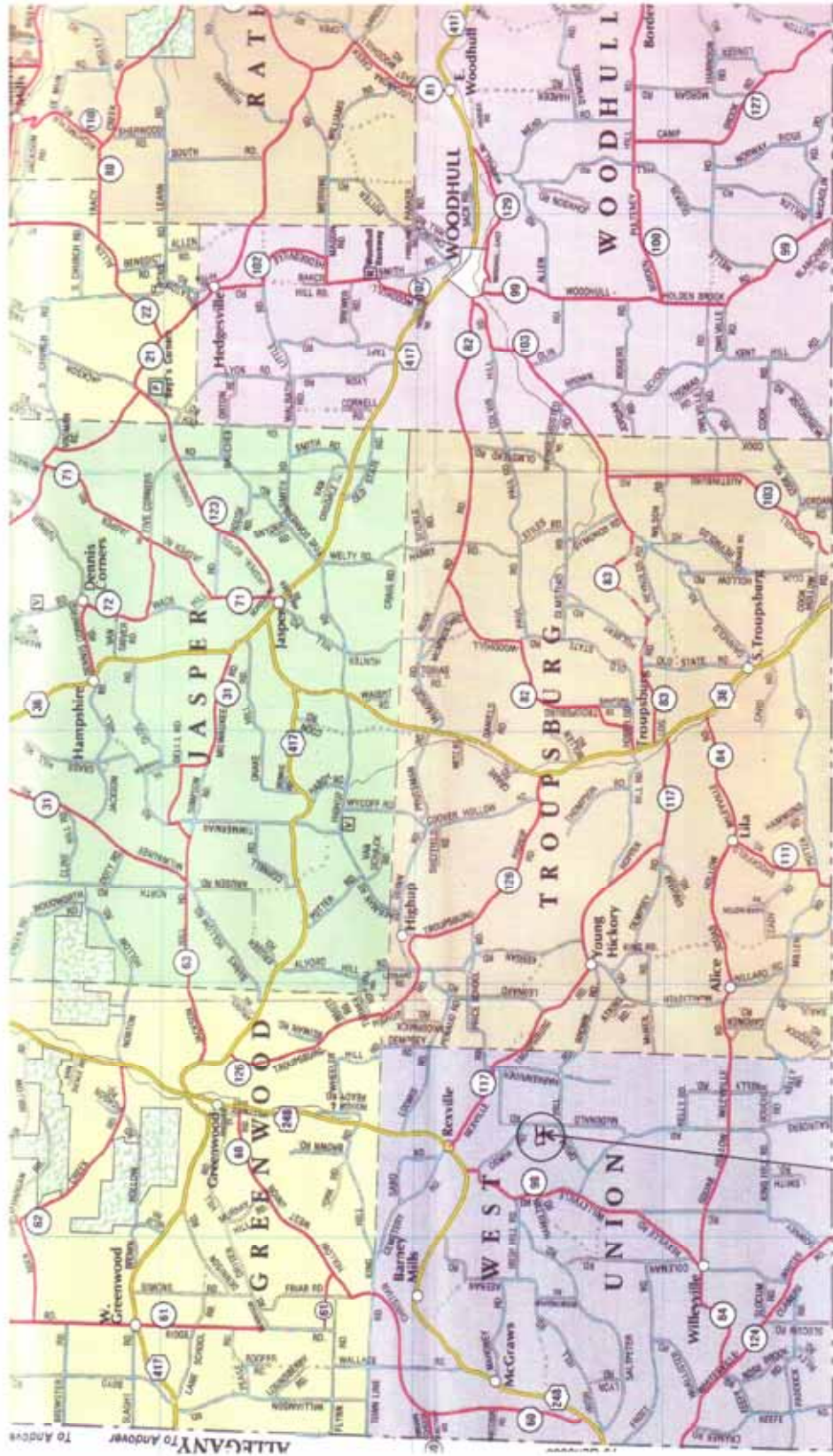
GREAT LOT 73

1365.34'

S 78°36'15" E 1390.09'

24.75'

MAP OF SOUTHERN STEUBEN COUNTY, NY AS IT BORDERS TIOGA COUNTY, PA



14.585 ACRES

PROPERTY IS LOCATED ON McDONALD ROAD BETWEEN DRAIN HILL ROAD AND OSBAIN ROAD

MAP OF NORTHERN TOGA COUNTY, PA AS IT
BORDERS STEUBEN COUNTY, NY

NY-PA BORDER

TAKE
NEW YORK
ROUTE 36
TO PROPERTIES

