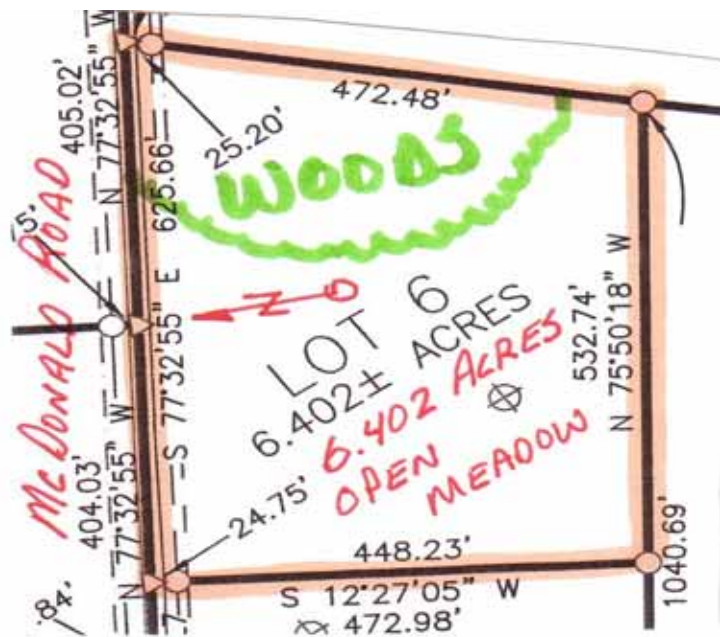
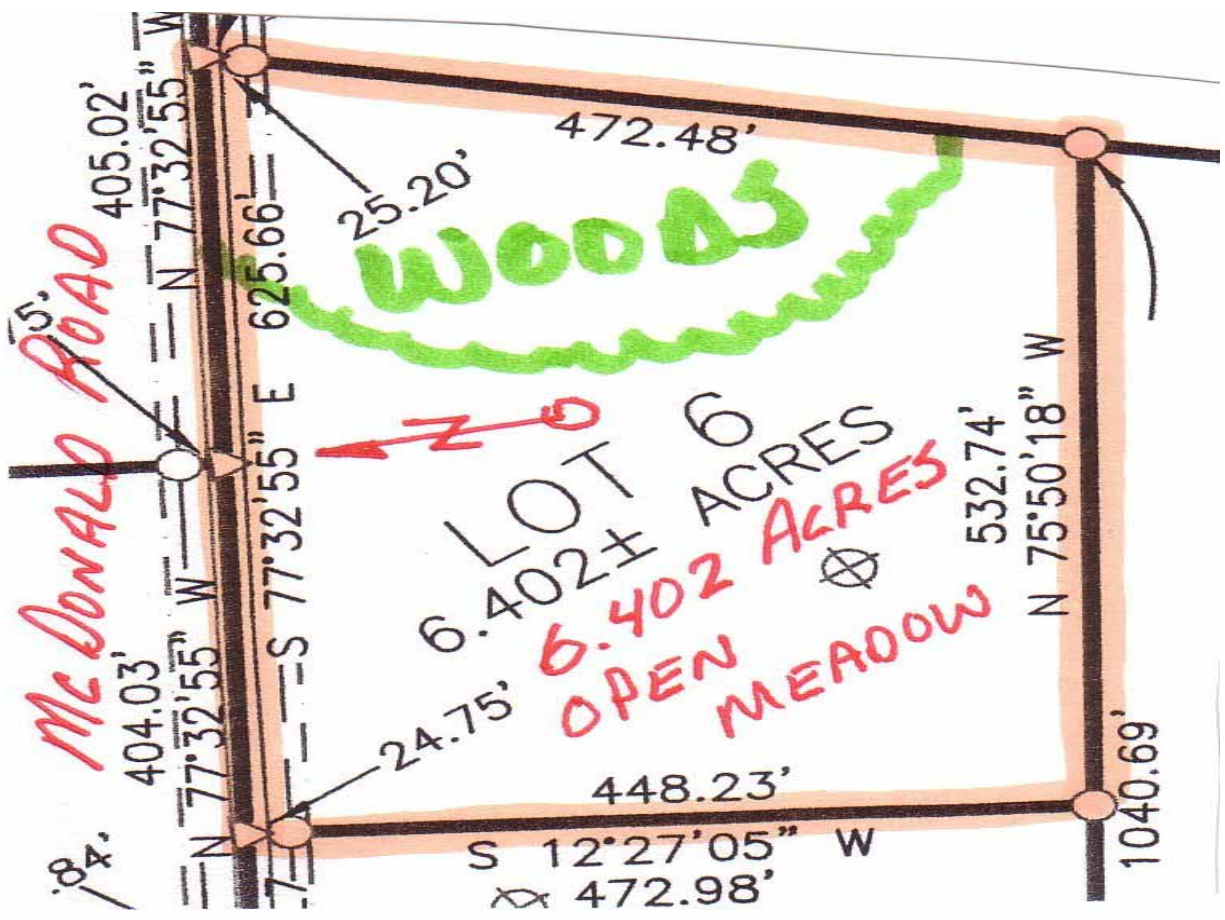


STEBEN COUNTY, NY— TOWN OF WEST UNION.— 6.402 ACRES
GREAT HOME OR CAMPSITE WITH VIEWS AND WOODS—\$18,200



No. 2444 - Steuben County, New York, Town of West Union — 6.402 acres. Nice home, cabin, or camp site in open meadow along quiet country road. Surveyed, onlot septic approved, and financing available. \$18,200

TIMBERLINE REAL ESTATE
ROUTE 267—CHOCONUT, PA
PHONE: 1-800-334-3659
EMAIL: land@timberlinerealestate.net
www.timberlinerealestate.net



McDonald Road

WOODS

LOT 6
6.402± ACRES
OPEN MEADOW

405.02'

472.48'

N 77°32'55" W

25.20'

625.66'

404.03'

S 77°32'55" E

24.75'

448.23'

S 12°27'05" W

472.98'

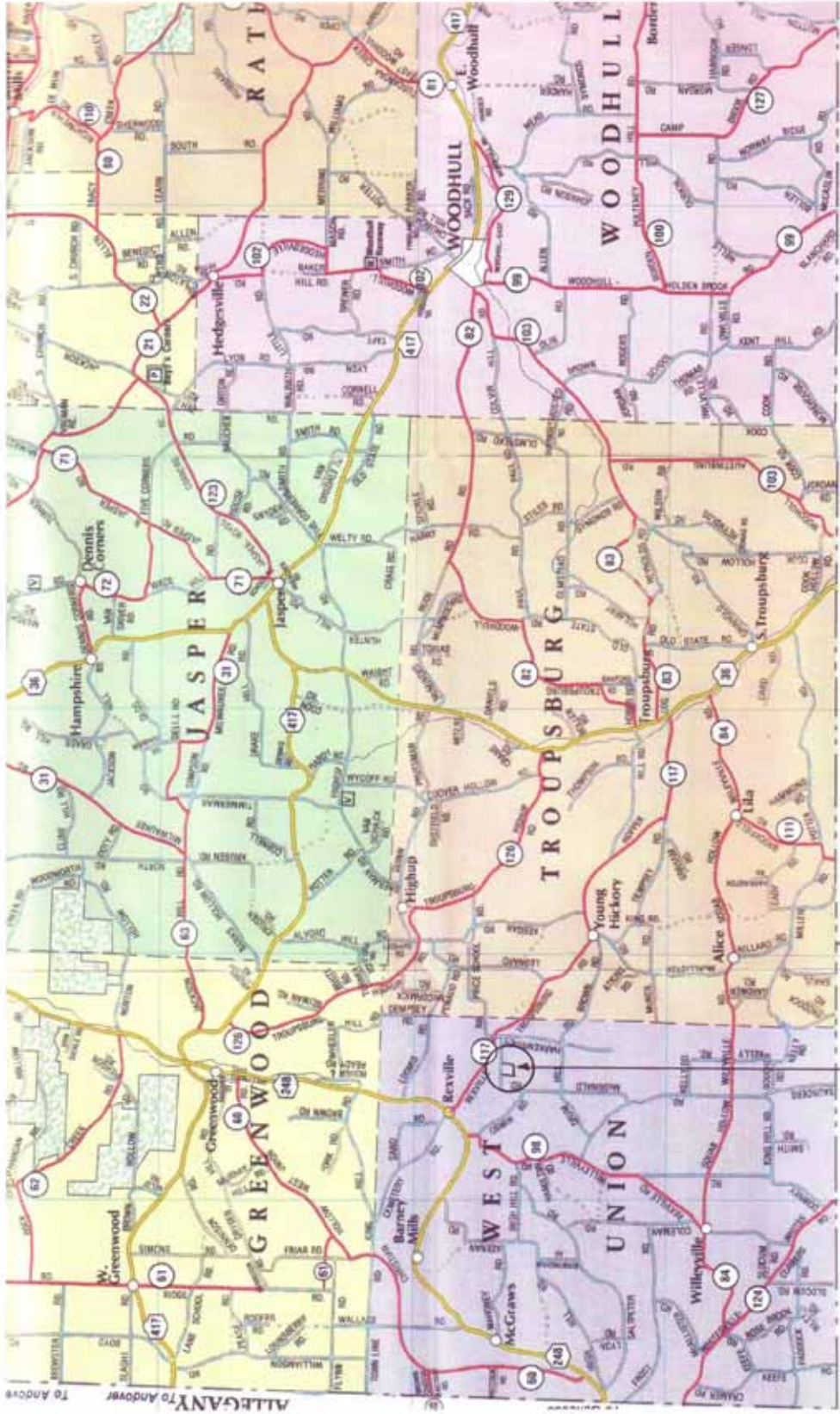
532.74'

N 75°50'18" W

1040.69'



MAP OF SOUTHERN STEUBEN COUNTY, NY AS IT BORDERS TIOGA COUNTY, PA



6,402 ACRES
PROPERTY IS LOCATED ON McDONALD ROAD BETWEEN OSWIN ROAD AND HARKENRIDER ROAD

