

STEBEN COUNTY, NY— TOWN OF WEST UNION.— 14.987 ACRES  
 OPEN AND WOODED PROEPRTY WITH TERRIFIC VIEWS—\$40,600



**No. 2442 - Steuben County, New York, Town of West Union — 14.987 acres. Nice meadow at front makes perfect homesite leading to hunting woods at he rear. Beautiful Views and quiet road. Surveyed, onlot septic approved, and financing available. \$40,600**

**TIMBERLINE REAL ESTATE  
 ROUTE 267—CHOCONUT, PA  
 PHONE: 1-800-334-3659  
 EMAIL: [land@timberlinerealestate.net](mailto:land@timberlinerealestate.net)  
[www.timberlinerealestate.net](http://www.timberlinerealestate.net)**

S 78°08'43" E  
405.00'

WOODED

BACK MEADOW

TREE ROW

S 11°44'29" W 1609.83'

1585.08'

S 11°44'29" W 1614.05'

1589.30'

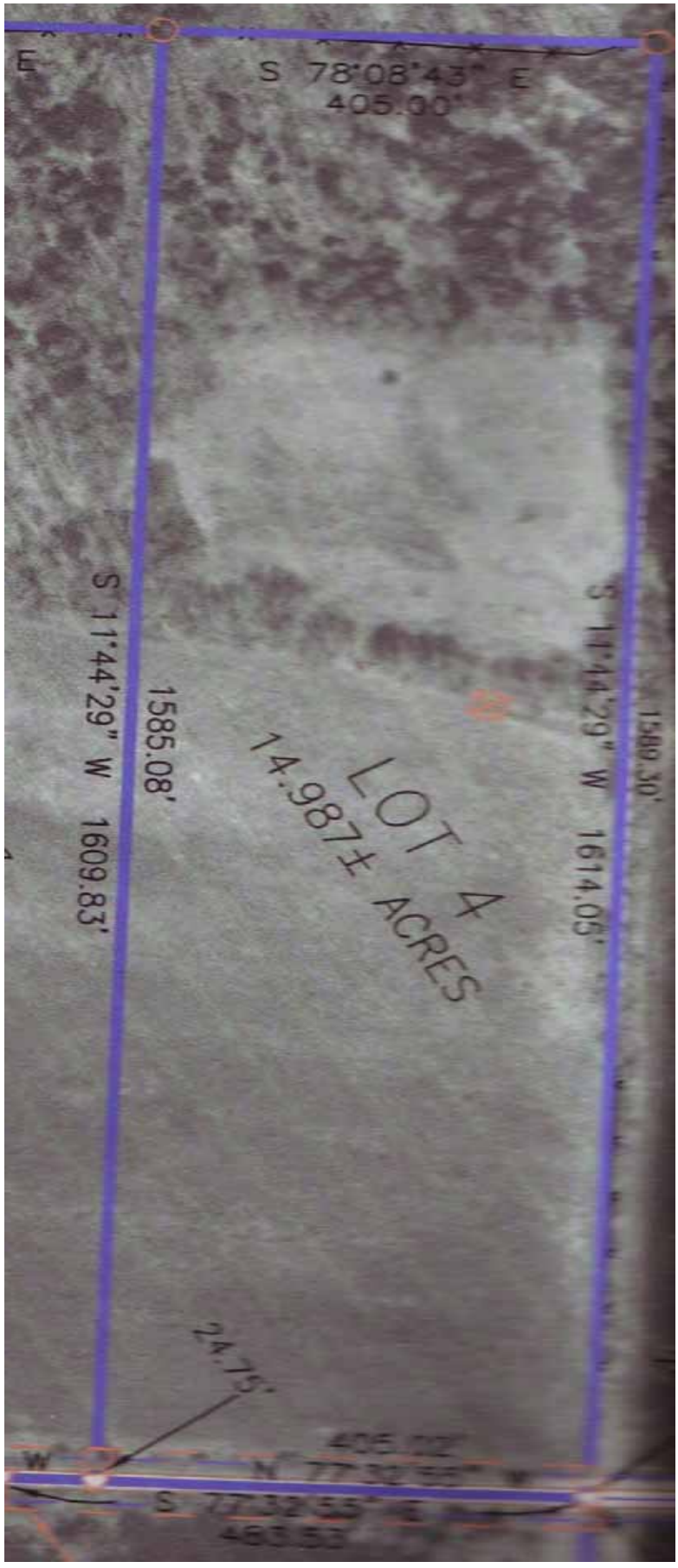
LOT 4  
14.987± ACRES

TERRIFIC VIEWS  
FROM LEVEL  
GENTLY SLOPING  
FIELD

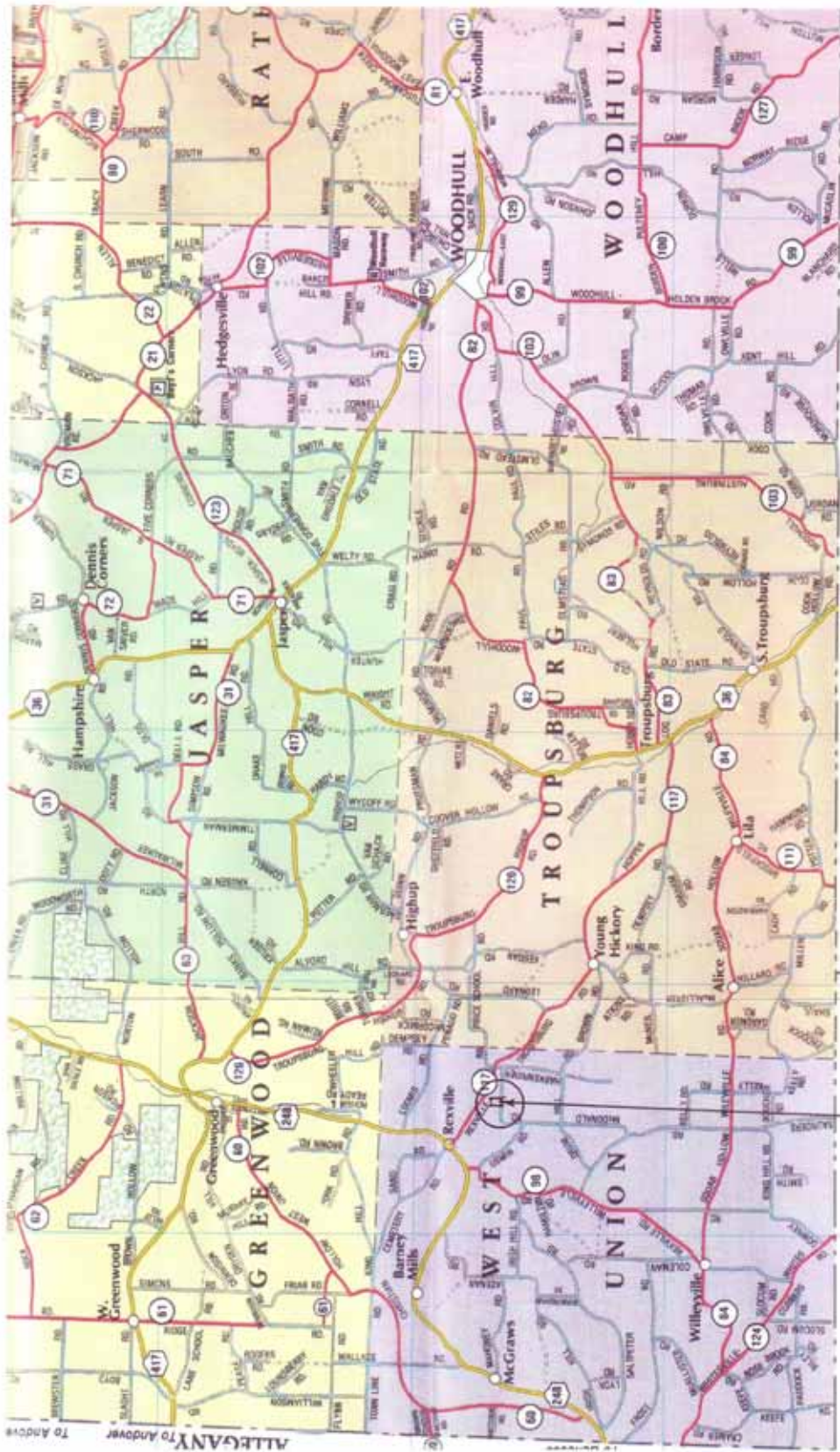
HERB ROW

24.75'  
McDONALD ROAD

405.02'  
W N 77°32'55" W  
S 77°32'55" E  
483.53'



MAP of Southern STEUBEN County, NY A. IT BORDERS TIOGA County, PA



14.987 ACRES

PROPERTY IS LOCATED ON McDONALD ROAD BETWEEN OSWIN AND HARKENFISER ROAD.

MAP OF NORTHERN TOGA COUNTY, PA AS IT  
BORDERS STEUBEN COUNTY, NY

NY-PA BORDER

TAKE  
NEW YORK  
ROUTE 36  
TO PROPERTIES

