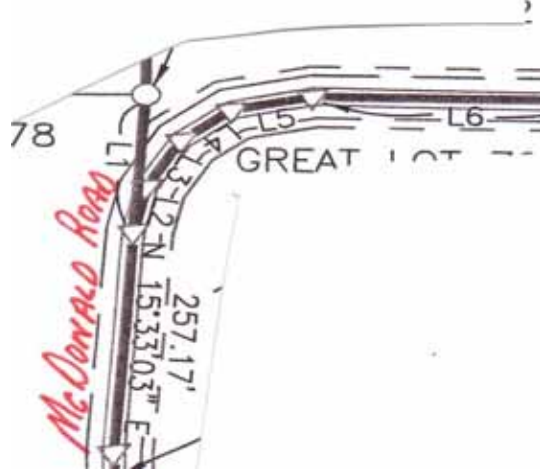
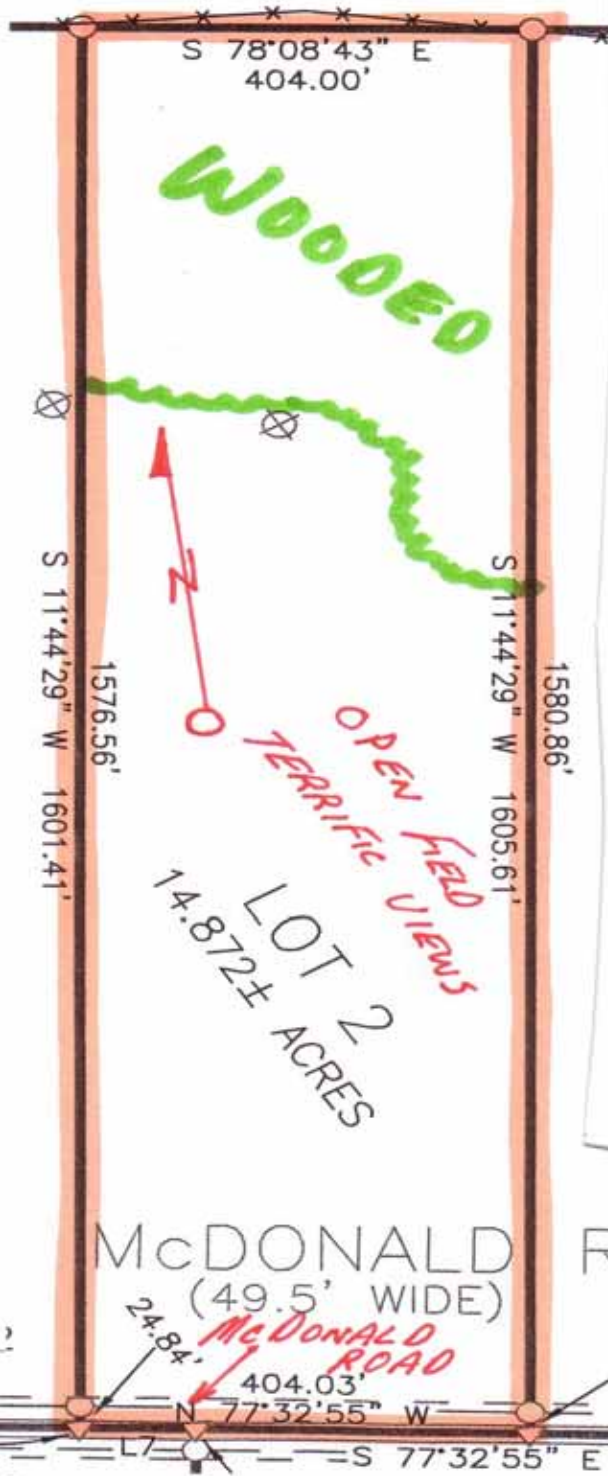


STEUBEN COUNTY, NY— TOWN OF WEST UNION.— 14.872 ACRES
OPEN AND WOODED PROPERTY WITH TERRIFIC VIEWS—\$40,200



**No. 2440 - Steuben County, New York,
Town of West Union — 14.872 acres.
Long range views from 4 wooded and
10 open acres with deer and turkey at
their finest. Surveyed, onlot septic
approved, and financing available.
\$40,200**

**TIMBERLINE REAL ESTATE
ROUTE 267—CHOCONUT, PA
PHONE: 1-800-334-3659
EMAIL: land@timberlinerealestate.net
www.timberlinerealestate.net**



McDONALD ROAD
(49.5' WIDE)

LOT 2
14.872± ACRES

WOODED

OPEN TERRIFIC FIELD VIEWS

McDONALD ROAD

GREAT LOT 77

78

24

24.84

404.03'

N 77°32'55" W

S 77°32'55" E

257.17'

N 15°33'03" E

S 78°08'43" E

S 78°08'43" E
404.00'

S 11°44'29" W
1576.56'

S 11°44'29" W
1605.61'

1580.86'

L1

L2

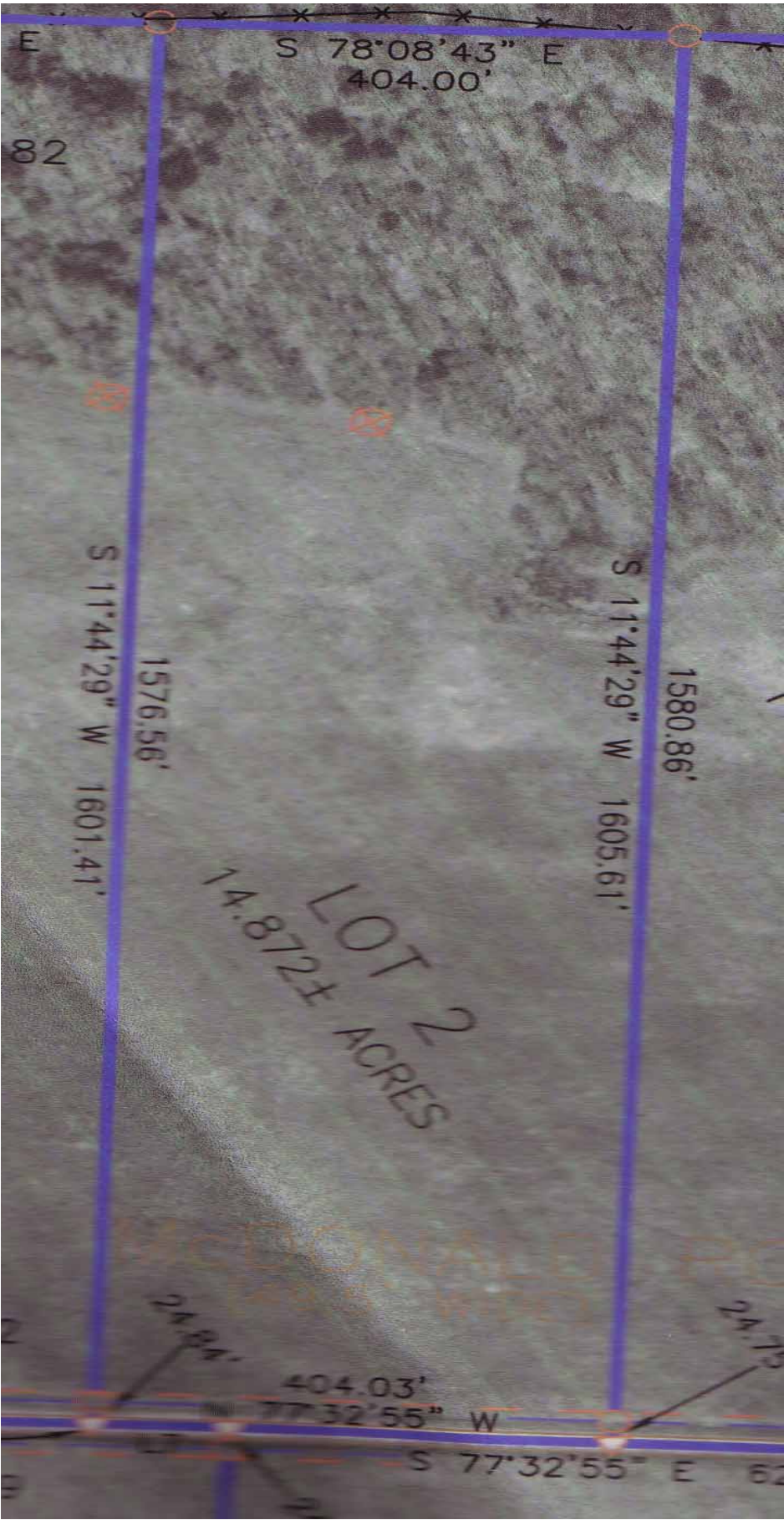
L3

L4

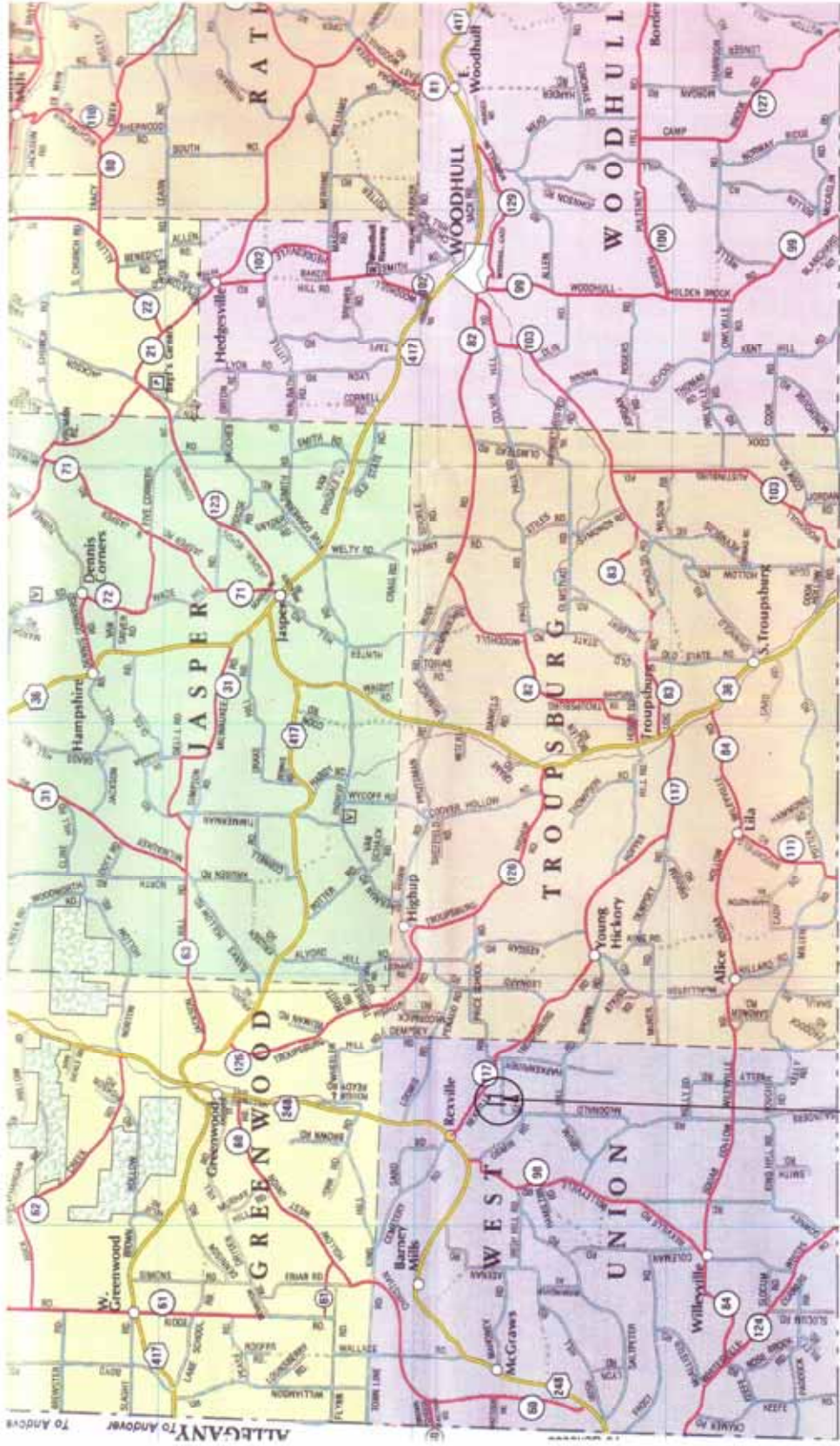
L5

L6

L7



MAP OF SOUTHERN STERIBEN COUNTY, NY AS IT BORDERS TIOGA COUNTY, PA



14.872 ACRES PROPERTY IS LOCATED ON McDONALD ROAD.
BETWEEN OSWIN ROAD AND HARKENRIDER ROAD

MAP OF NORTHERN TOGA COUNTY, PA AS IT
BORDERS STEUBEN COUNTY, NY

NY-PA BORDER

TAKE
NEW YORK
ROUTE 36
TO PROPERTIES

