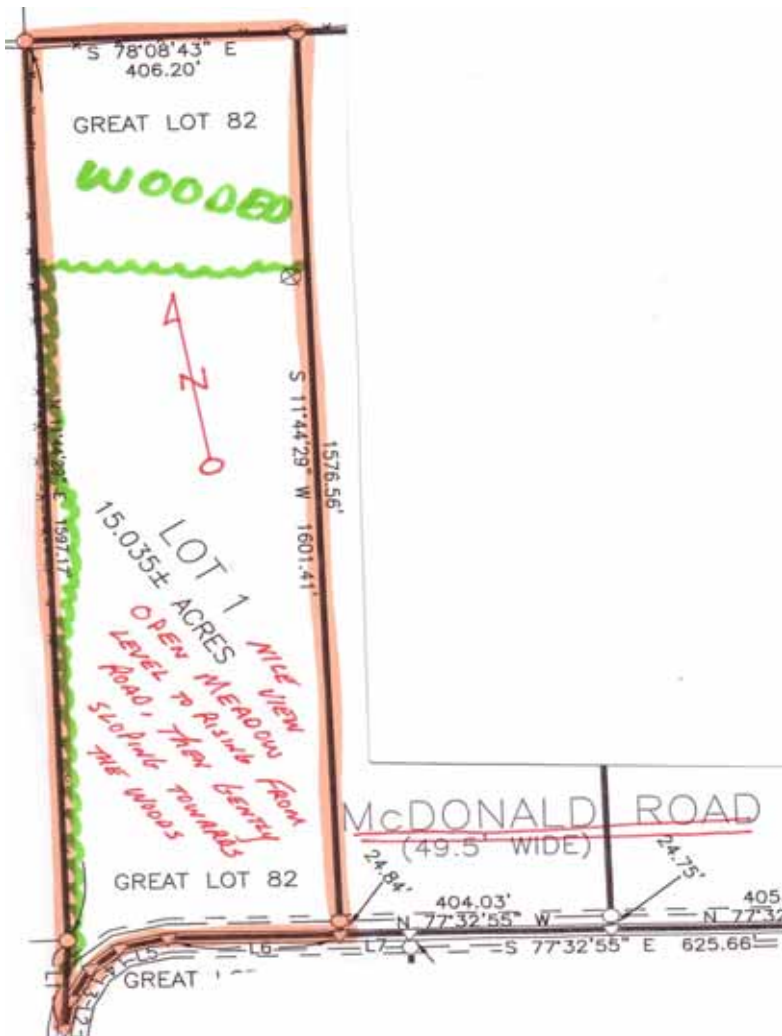
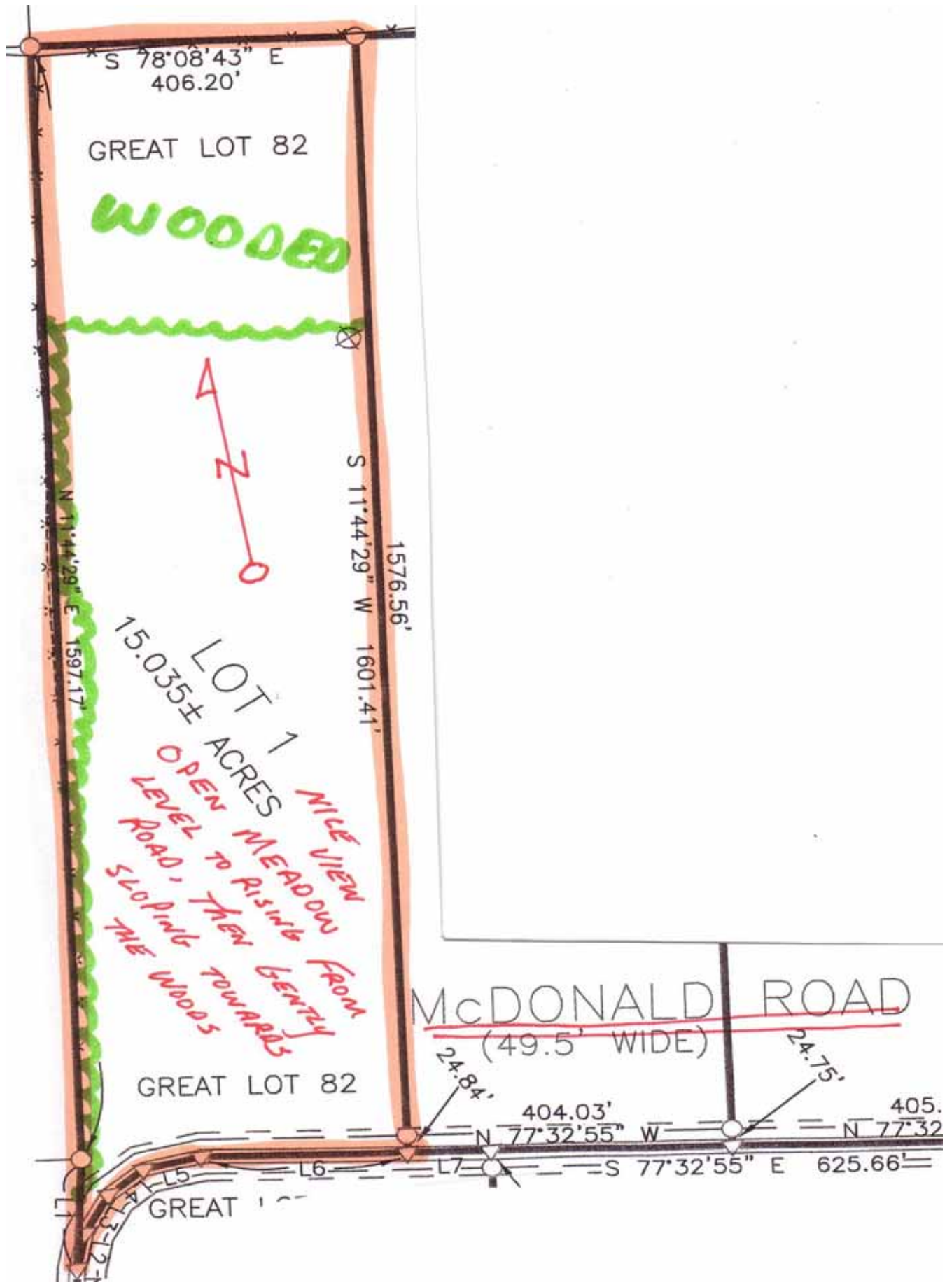


STEBEN COUNTY, NY— TOWN OF WEST UNION.— 15.035 ACRES
 OPEN AND WOODED WITH GREAT VIEWS \$40,600



TIMBERLINE REAL ESTATE
 ROUTE 267—CHOCONUT, PA
 PHONE: 1-800-334-3659
 EMAIL: land@timberlinerealestate.net
www.timberlinerealestate.net

**No. 2439 - Steuben County,
 New York, Town of West Un-
 ion — 15.035 acres. Beautiful
 Views from open and wooded
 property featuring 12 open and
 3 wooded acres. Nice home,
 cabin, or camp site. Sur-
 veyed, on lot septic approved,
 and financing available.
 \$40,600**



S 78°08'43" E
406.20'

GREAT LOT 82

WOODED



S 11°44'29" W 1601.41'

1576.56'

N 11°44'29" E 1597.17'

LOT 1
15.035± ACRES
*OPEN MEADOW
ROAD, THEN
SLOPING TOWARDS
THE WOODS*

*NICE VIEW
FROM
GENTLY*

McDONALD ROAD
(49.5' WIDE)

GREAT LOT 82

24.84'

404.03'

24.75'

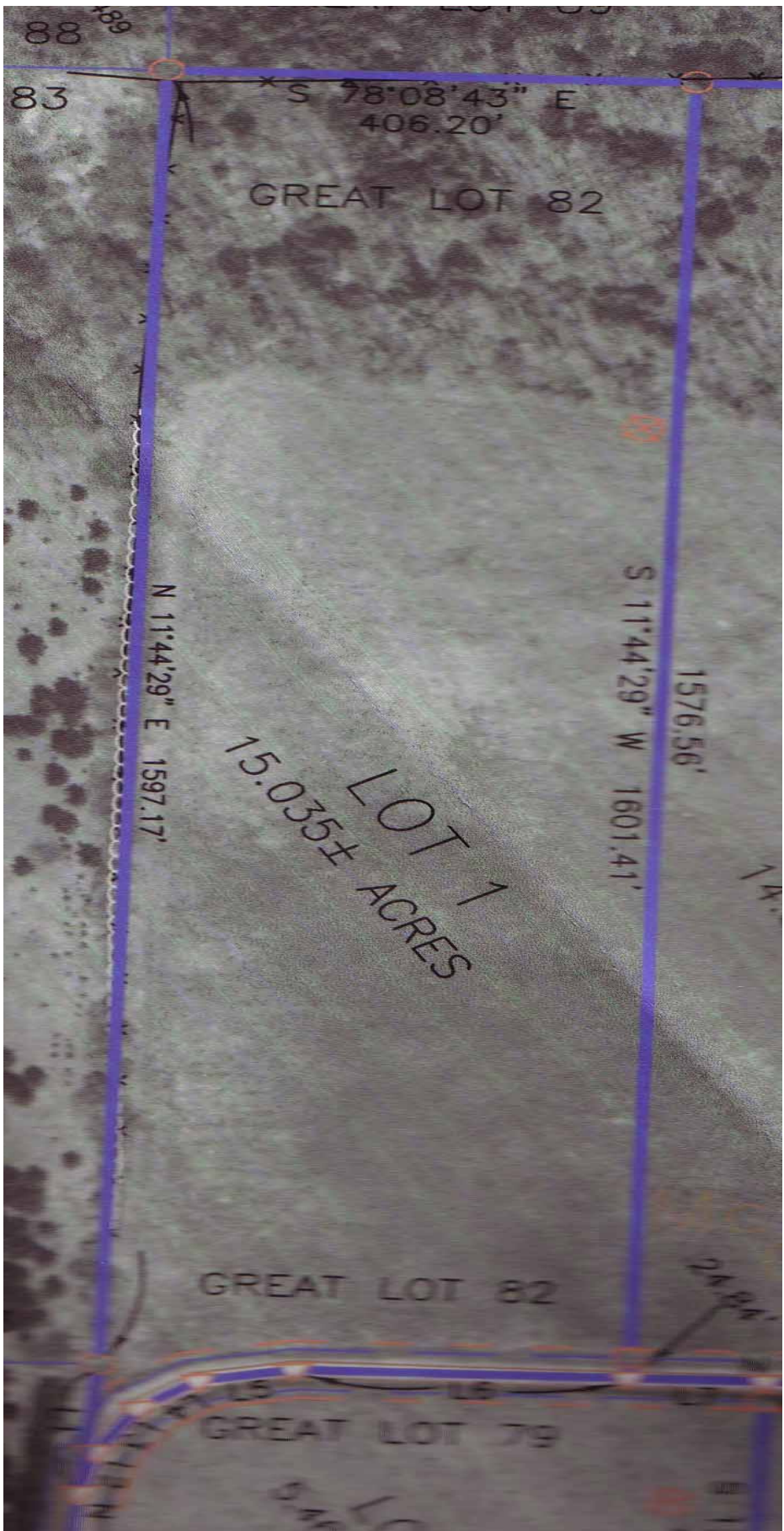
N 77°32'55" W

405.0'

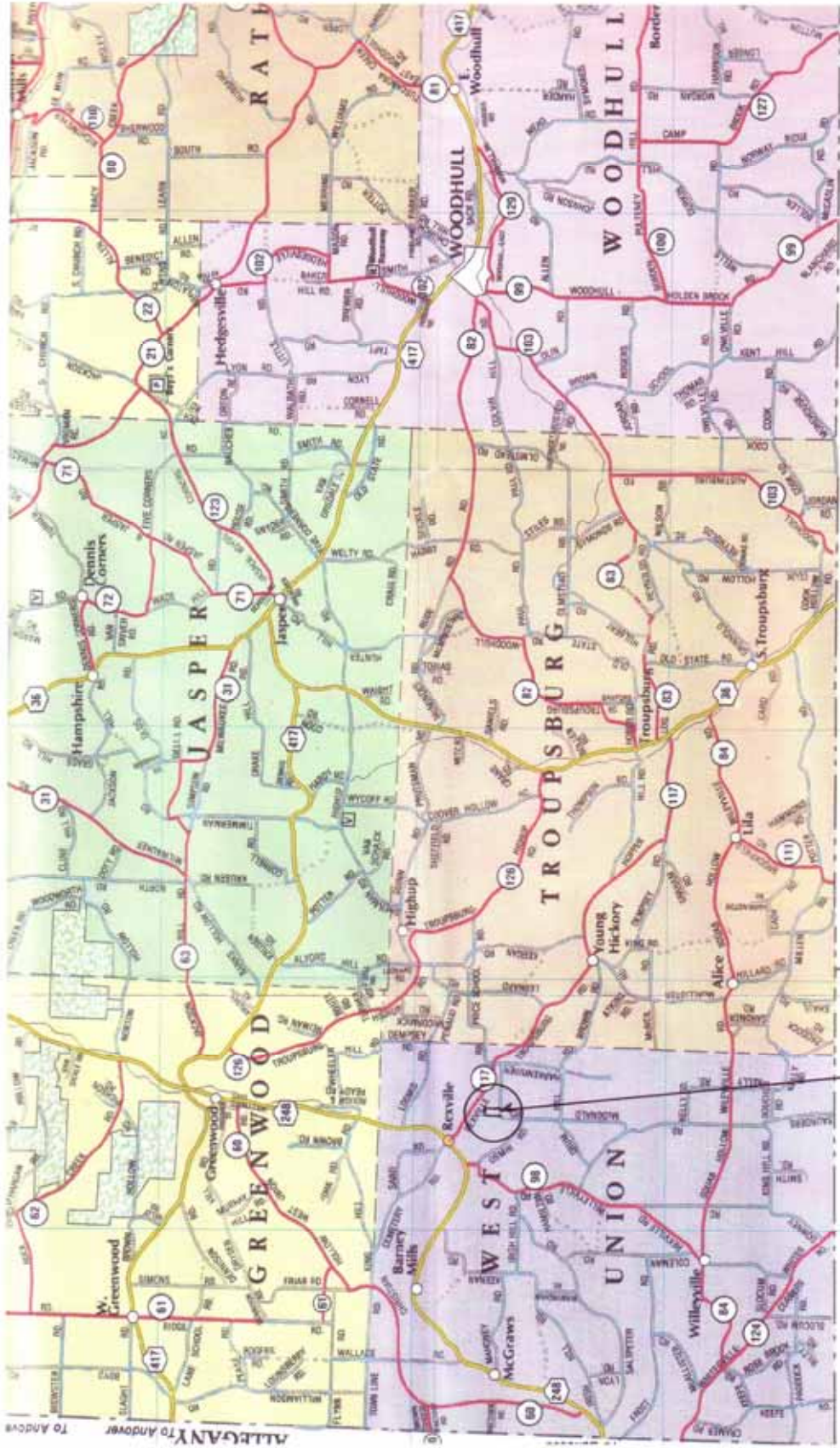
S 77°32'55" E 625.66'



GREAT LOT 82



MAP OF SOUTHERN STEUBEN COUNTY, NY AS IT BORDERS TUGA COUNTY, GA



15.035 ACRES PROPERTY IS LOCATED ON McDONALD ROAD BETWEEN THE INTERSECTION OF OSMIN AND HARKER RIVER ROADS.

MAP OF NORTHERN TOGA COUNTY, PA AS IT
BORDERS STEUBEN COUNTY, NY

NY-PA BORDER

TAKE
NEW YORK
ROUTE 36
TO PROPERTIES

