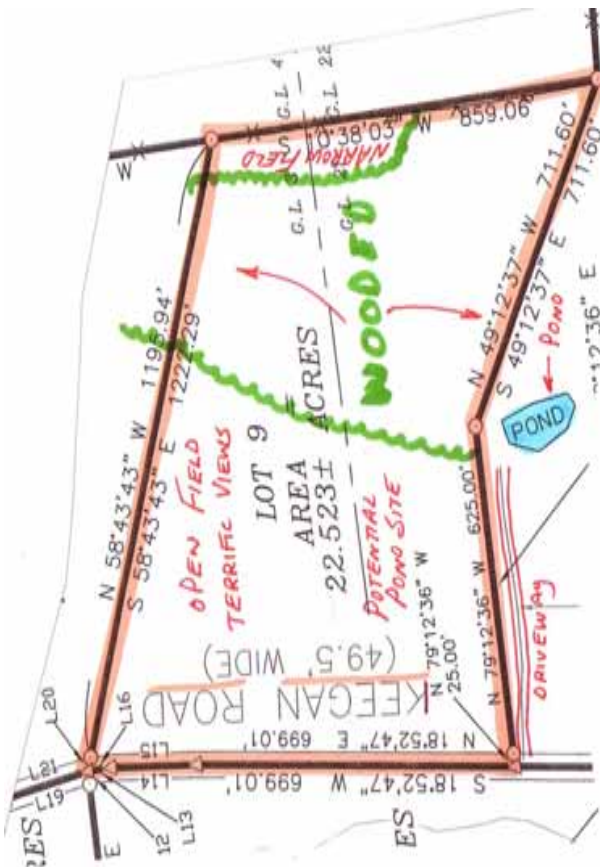
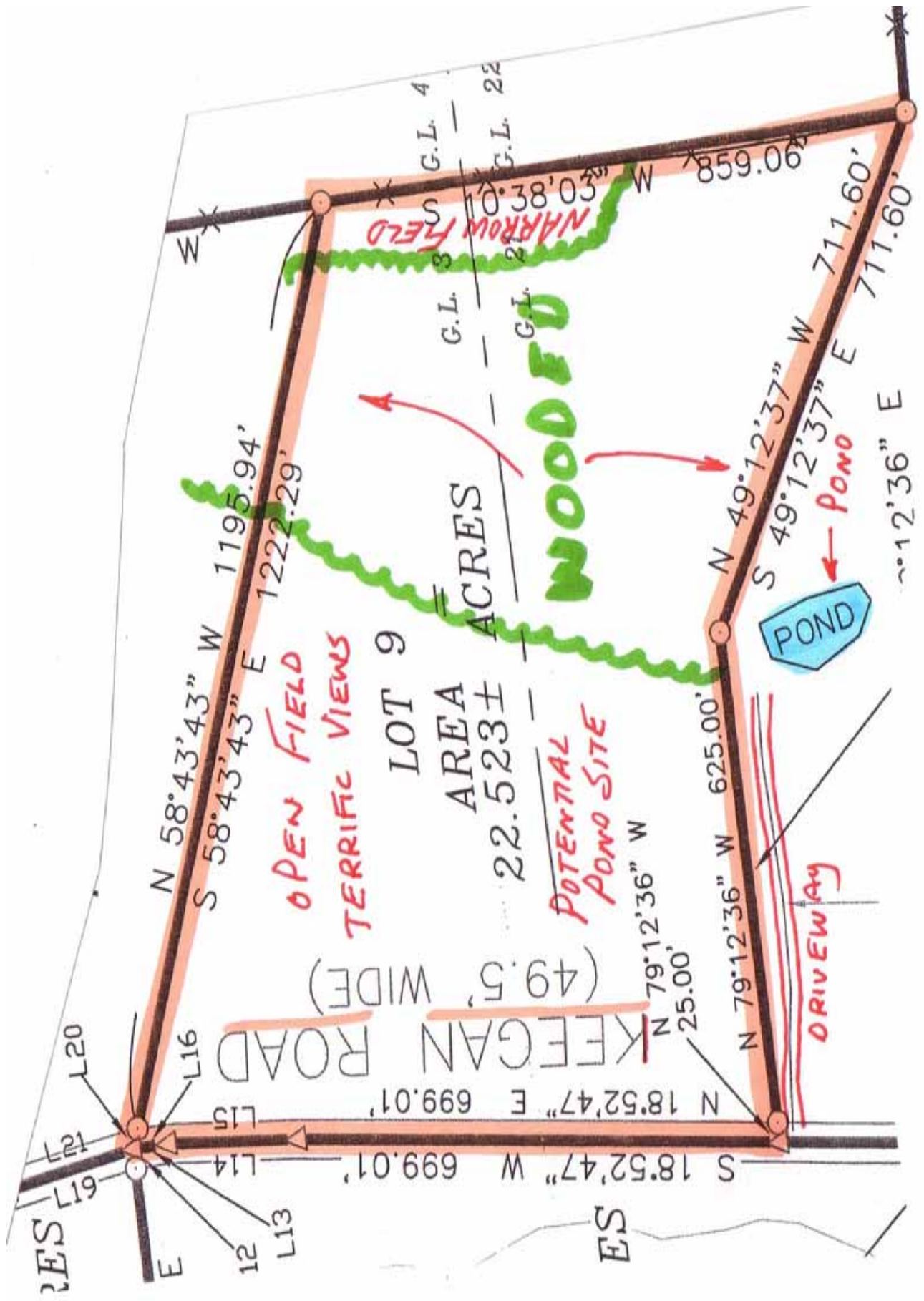


**STEBEN COUNTY, NY— TOWN OF TROUPSBURG.— 22.523 AC.-
 OPEN AND WOODED PROPERTY, GREAT VIEWS, GREAT HUNTING \$60,900**



TIMBERLINE REAL ESTATE
ROUTE 267—CHOCONUT, PA
PHONE: 1-800-334-3659
EMAIL: land@timberlinerealestate.net
www.timberlinerealestate.net

No. 2429 - Steuben County, New York, Town of Troupsburg — 22.523 acres. 12 acres open and 10.5 acres wooded with long road frontage. Potential pond site with deer and turkey being sighted. Surveyed, on lot septic approved, utilities at road, and financing available.\$60,900



ES

E

12

L13

L14

L15

L16

L20

L17

L18

L19

KEEGAN ROAD
(49.5' WIDE)

OPEN FIELD
TERRIFIC VIEWS

LOT 9
AREA
22.523±
ACRES

POTENTIAL
POND SITE

DRIVEWAY

POND

WOODED

NARROW FIELD

N 58°43'43" W 1195.94'
S 58°43'43" E 1222.29'

G.L. 3
G.L. 2

G.L. 4
G.L. 22

N 79°12'36" W 25.00'

N 79°12'36" W 625.00'

N 49°12'37" W 711.60'

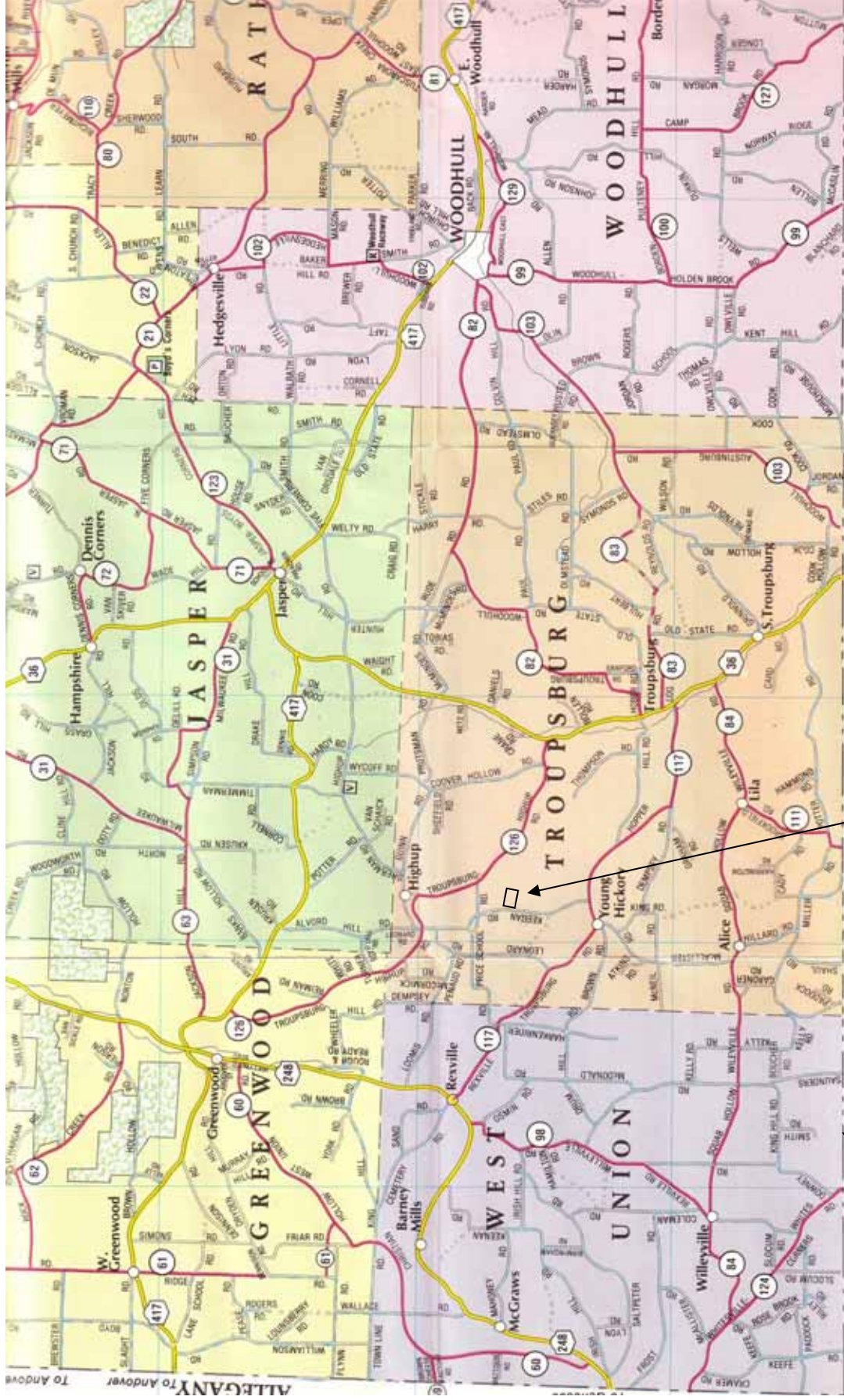
S 49°12'37" E 711.60'

N 12'36" E

S 18°52'47" W 699.01'
N 18°52'47" E 699.01'

ES

Map of Southern Steuben County, NY as it Borders Tioga County, PA



22.523 acres

PA—NY
border

Property is Located on Keegan Road South of the Intersection of Price School Road and Keegan Road in the Town of Troupsburg.

MAP OF NORTHERN TOGA COUNTY, PA AS IT
BORDERS STEUBEN COUNTY, NY

TAKE
NEW YORK
ROUTE 36
TO PROPERTIES
NY-PA BORDER

