

STEUBEN COUNTY, NY— TOWN OF TROUPSBURG.-12.466 AC.-  
 OPEN AND WOODED PROPERTY, GREAT VIEWS SOUTHERN EXPOSURE \$33,900



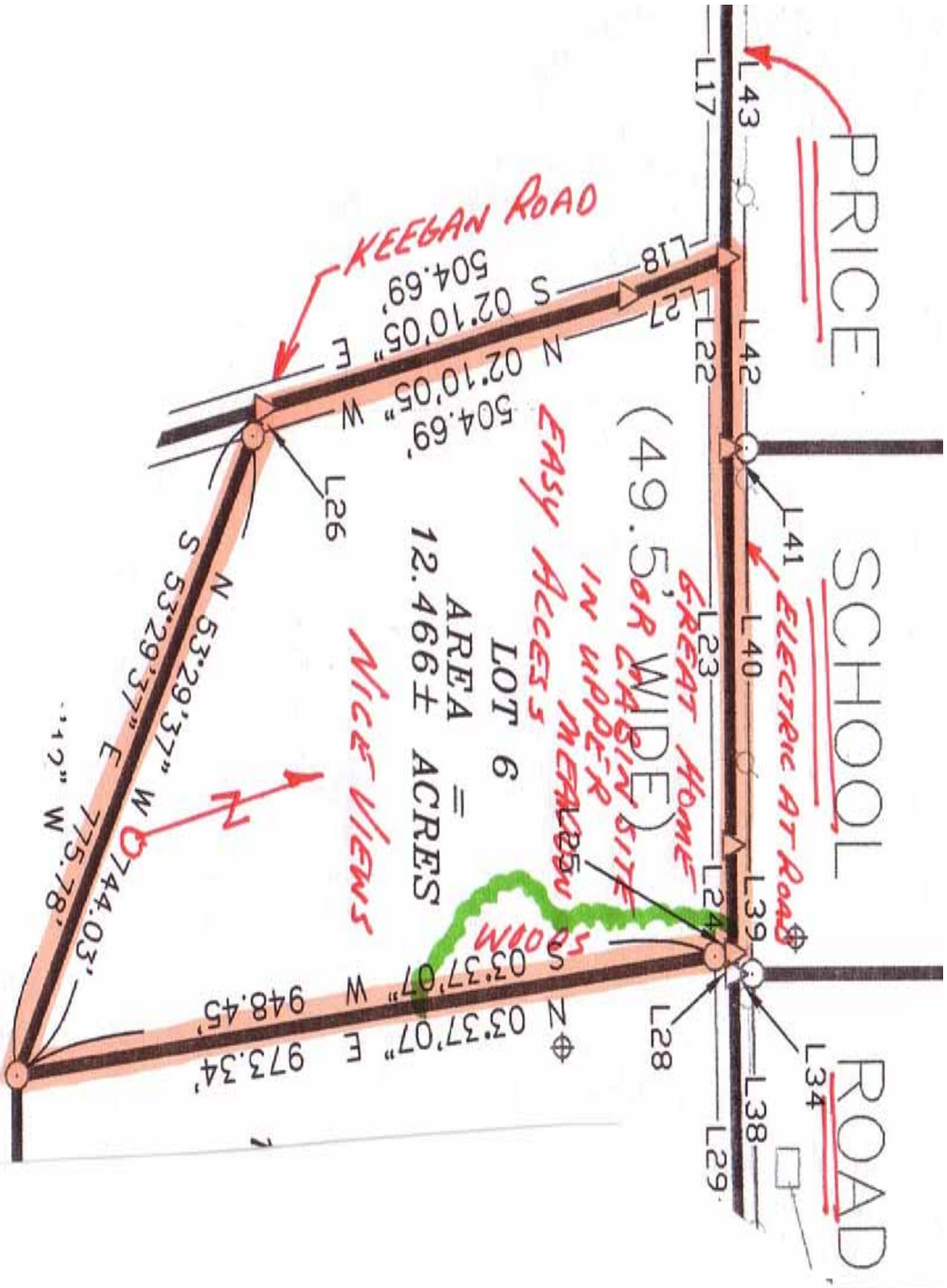
**TIMBERLINE REAL ESTATE**  
**ROUTE 267—CHOCONUT, PA**  
**PHONE: 1-800-334-3659**  
**EMAIL: [land@timberlinerealestate.net](mailto:land@timberlinerealestate.net)**  
**[www.timberlinerealestate.net](http://www.timberlinerealestate.net)**

No. 2426 - Steuben County, New York, Town of Troupsburg — 12.466 acres. Choice parcel featuring beautiful home or cabin site. Valley views, southern exposure, frontage on two roads, fresh air blowing through your hair or across your scalp. Surveyed, onlot septic approved, utilities at road, and financing available. \$33,900

PRICE

SCHOOL

ROAD





MAP OF NORTHERN TOGA County, PA AS IT  
BORDERS STEUBEN County, NY

NY-PA BORDER

TAKE  
NEW YORK  
ROUTE 36  
TO PROPERTIES

