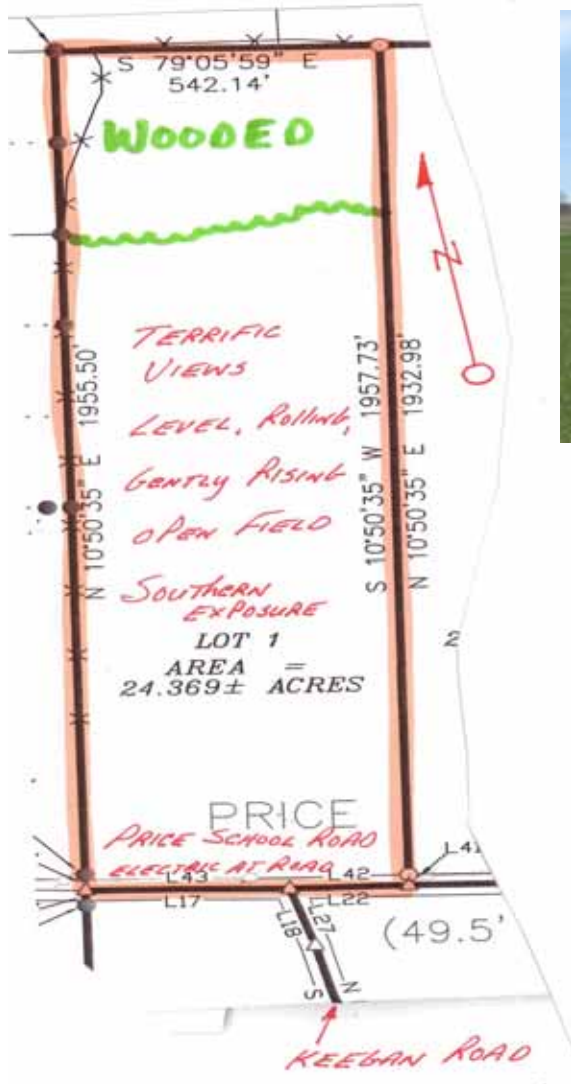
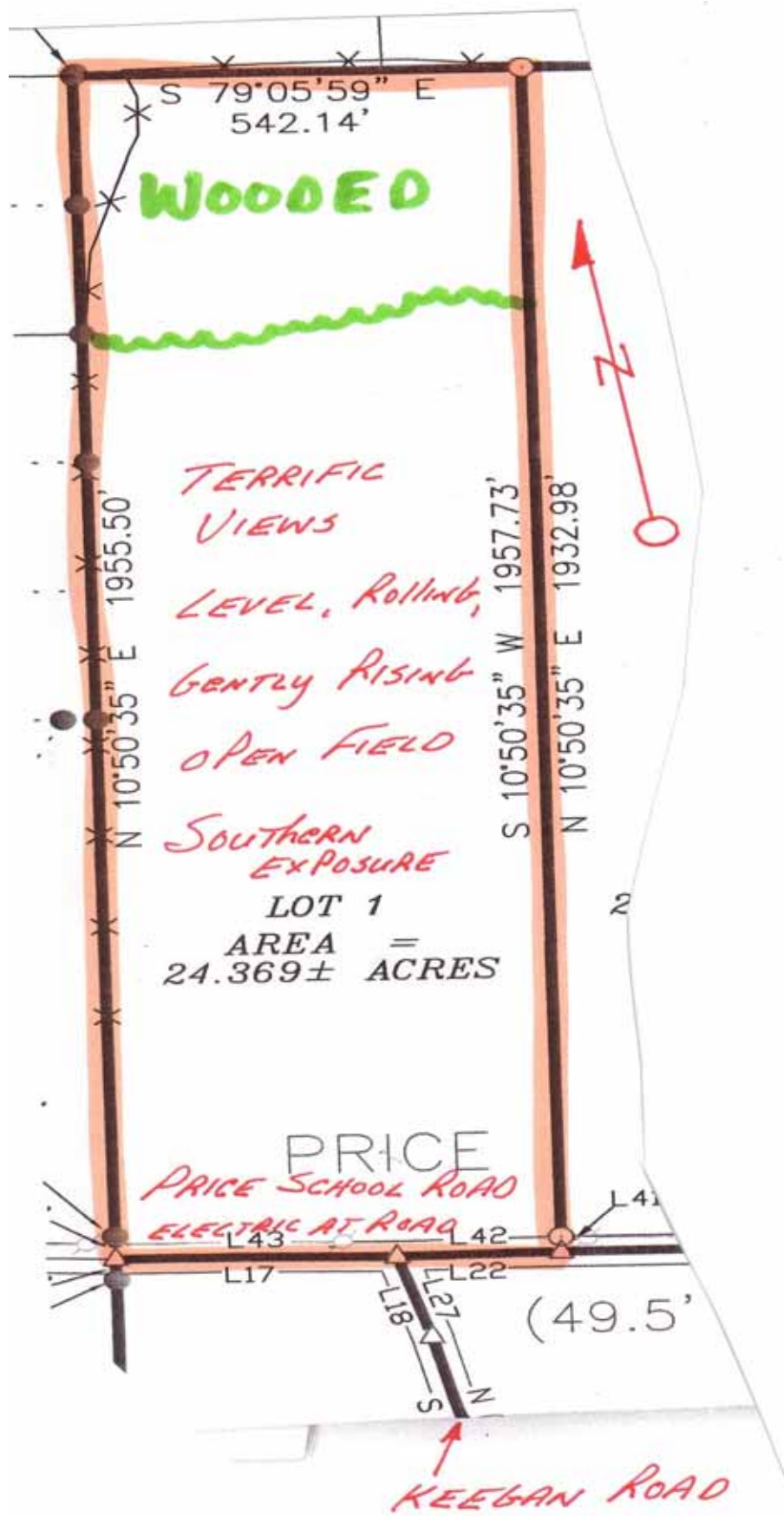


STEUBEN COUNTY, NY— TOWN OF TROUPSBURG.-24.369 AC.-  
 OPEN AND WOODED PROPERTY, GREAT VIEWS SOUTHERN EXPOSURE \$65,900

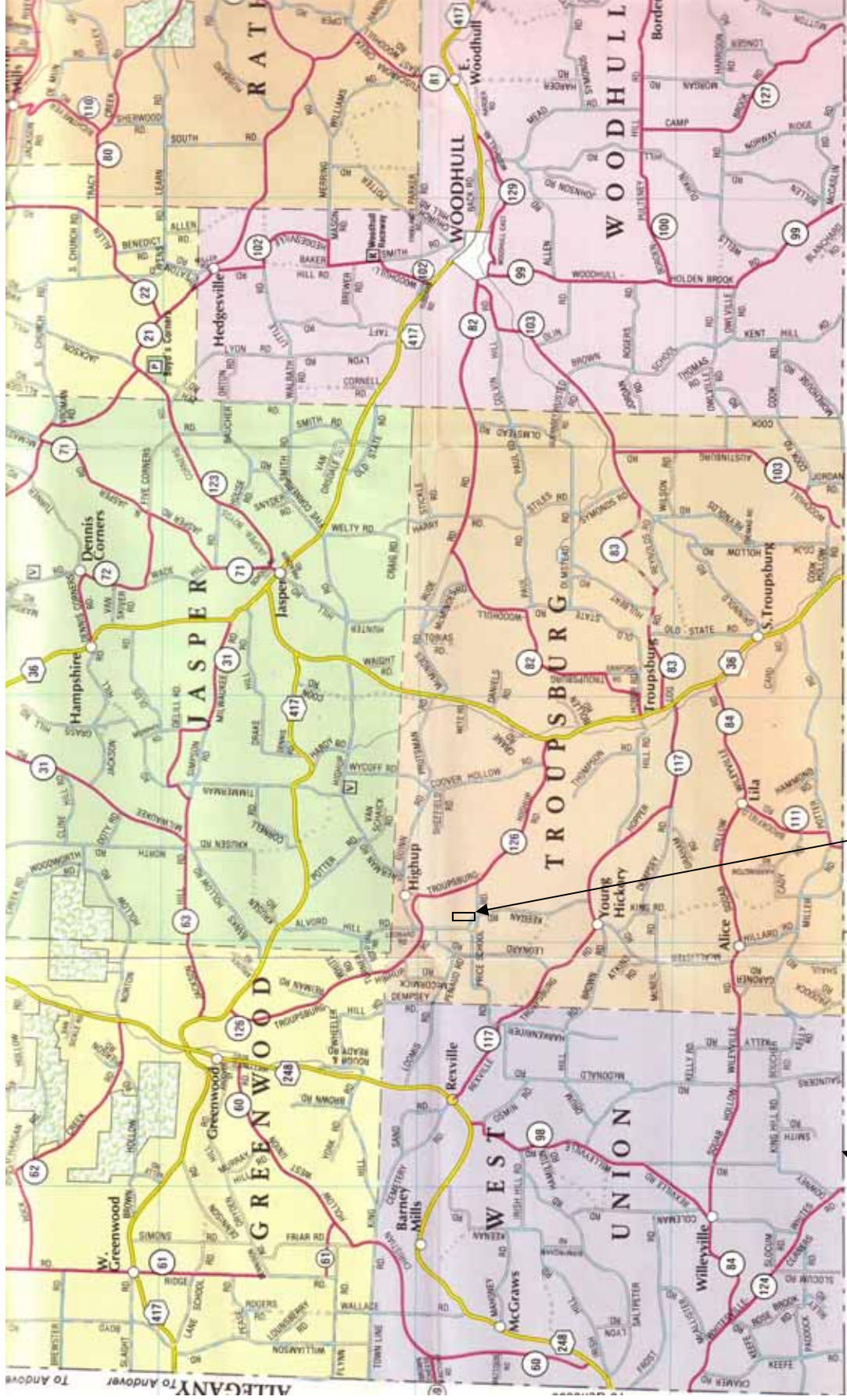


**TIMBERLINE REAL ESTATE**  
**ROUTE 267—CHOCONUT, PA**  
**PHONE: 1-800-334-3659**  
**EMAIL: [land@timberlinerealestate.net](mailto:land@timberlinerealestate.net)**  
**[www.timberlinerealestate.net](http://www.timberlinerealestate.net)**

No. 2421 - Steuben County, New York, Town of Troupsburg — 24.369 acres. Tremendous views and southern exposure are features that can be enjoyed with the deer and turkey. Rolling and rising meadow with woods at rear. Surveyed, onlot septic approved, utilities at road, and financing available. \$65,900



# Map of Southern Steuben County, NY as it Borders Tioga County, PA



24.369 acres

PA-NY border

Property is Located on Price School Road, North of the Intersection of Price School Road and Keegan Road in the Town of Troupsburg.

MAP OF NORTHERN TOGA COUNTY, PA AS IT  
BORDERS STEUBEN COUNTY, NY

NY-PA BORDER

TAKE  
NEW YORK  
ROUTE 36  
TO PROPERTIES

